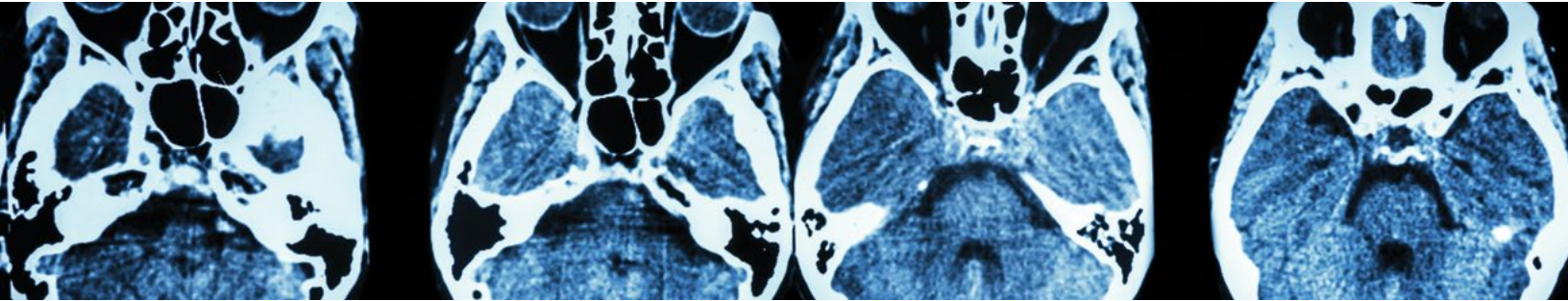


# GATEWAY

## DIAGNOSTIC IMAGING

Impeccable quality. Patient savings.

# ENT imaging you can trust.



### ENT MRI Protocols

- Brain
- Brain CSF Flow without CINE
- Brain IAC
- Brain Trigeminal Neuralgia
- MR Angiogram
- Orbit, Face and/or Neck
- Soft Tissue Neck
- Skull Base
- TMJ

### ENT CT Protocols

- CTA Brain and Neck
- Maxillofacial
- Sinus
- Surgical Sinus (Brainlab®, Fiagon®, Medtronic®, Stealth, Stryker®)
- Soft Tissue Neck
- Temporal Bone and/or IAC

### Other Services

- Ultrasound
- X-ray (Rapid Chest)

# Reliable, crisp, clear ENT images read by a team of 6 board-certified, subspecialized neuroradiologists

- Advanced imaging services with **3T wide-bore MRI and fast scan technology available at all locations**
- **Low-dose, 64-slice CT** for superior image quality with significantly lower radiation dosages
- Full-time **contrast coverage**
- **Radiologists are available for immediate consultation and questions**
- **Review images and reports anytime** with our web-based portal, Synapse®
- **Same-day and next-day appointments available**

---

Ability to create **customized protocols and reports** to best inform your treatment decisions

---

Schedule your patient today

GATEWAY  
DIAGNOSTIC IMAGING