



Scope of Services

YOUR CHOICE FOR PREMIER DIAGNOSTIC IMAGING

GATEWAY

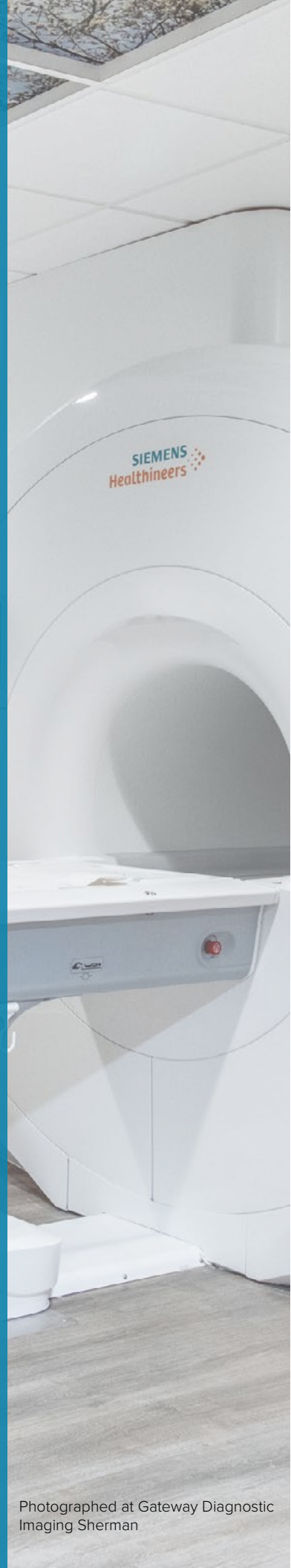
DIAGNOSTIC IMAGING

Impeccable quality. Patient savings.

Impeccable **quality.** Patient **savings.**

Since 2007, **Gateway Diagnostic Imaging** has been a local provider of **industry-leading** diagnostic services in the Dallas-Fort Worth area.

- Advanced imaging services with **3T wide-bore MRI and fast scan technology available at all locations**
- Full-time **contrast coverage**
- **Expert reads you can trust** from board-certified, subspecialized radiologists
- Ability to create **customized protocols and reports** based on your preference
- **13 convenient locations** with **extended and weekend hours** to accommodate your patients' busy schedules
- **Same-day and next-day appointments available**
- An affordable option **in-network with all major insurances**
- **Innovative technology** to make the experience **easier for you and your patients** from start



GATEWAY

DIAGNOSTIC IMAGING

Scope of Services

	Ablene	Arlington	Dallas	Frisco	Ft. Worth Medical District	Keller/Alliance	Mansfield	Mid-Cities	Plano	Richardson	Sherman	South Fort Worth	Weatherford
--	--------	-----------	--------	--------	----------------------------	-----------------	-----------	------------	-------	------------	---------	------------------	-------------

State-of-the-Art Technology

3T Wide-Bore MRI w/ Fast Scan Technology	●	●	●	●	●	●	●	●	●	●	●	●	●
1.5T Wide-Bore MRI			●										●
1.5T High Field MRI	●			●									
High Field Open MRI	●				●								
CT (64-slice)	●	●	●	●	●		●	●	●	●	●	●	●
CT						●							
Ultrasound (Venous Doppler)	●	●	●	●	●	●	●	●	●	●	●	●	●
X-ray		●	●	●	●	●	●	●	●	●	●	●	●

Services

Arthrogram	●	●	●	●	●	●		●			●		●
Aspirations			●										
Calcium Scoring	●	●	●	●	●		●	●	●	●	●	●	●
CTA	●	●	●	●	●	●	●	●	●	●	●	●	●
CTA Runoff	●	●	●	●	●		●	●	●	●	●	●	●
CT Cystogram		●					●						
CT Enterography	●	●	●	●	●	●	●	●	●	●	●	●	●
CT Lung Screening	●	●	●	●	●	●	●	●	●	●	●	●	●
Fluoroscopy	●	●	●	●	●	●		●			●		●
IVP/CT Urogram	●	●	●	●	●	●	●	●	●	●	●	●	●
MR Enterography	●	●	●		●	●	●	●	●	●	●	●	●
MRCP/MRCP+	●	●	●	●	●	●	●	●	●	●	●	●	●
MRI Brain ARIA	●	●	●	●	●	●	●	●	●	●	●	●	●
MRI TMJ	●	●	●	●	●	●	●	●	●	●	●	●	●
NeuroQuant®	●	●	●	●	●	●	●	●	●	●	●	●	●
Pediatric CT (12-19 YO)	●	●	●	●	●	●	●	●	●	●	●	●	●
Prostate MRI (3T Protocol)	●	●	●	●	●	●	●	●	●	●	●	●	●
Steroid Injection			●	●									



Scan to:

- View Specialty Protocols
- Download our Script Pad
- Access our Portal

Or visit bit.ly/GatewayProviderResources

Why Gateway?

Impeccable quality.

Gateway Diagnostic Imaging has a team of certified, registered technologists and we offer 3T wide-bore MRI at all locations. The board certified, subspecialized radiologists provide detailed and customized reports you can trust.

Patient savings.

Gateway is in-network with all major insurances. Patients save up to 400% compared to hospital MRIs.

We make it easy.

With innovative technology and multiple locations, we offer easy scheduling and fast turnaround time to serve both you and your patients.

Schedule your patient **TODAY**

GATEWAY
DIAGNOSTIC IMAGING

Impeccable quality. Patient savings.
YOUR CHOICE FOR PREMIER DIAGNOSTIC IMAGING